

## SafeGuard™ VLF Pro

### Vertical Laminar Flow Cabinet



Laboratory Systems Group's SafeGuard VLF™ Vertical Laminar Flow cabinet offer a clean environment to allow contamination-free manipulation of samples. The SafeGuard VLF™ features a compact design that can provide laboratories the space to operate in a clean zone. The ISO Class 5 environment is achieved using the SafeGuard VLF™. Air from the exterior is delivered into the unit through a pre-filter and further cleaned using a H14 HEPA filter.

The SafeGuard VLF™ is designed and manufactured here in Australia.

To ensure proper maintenance, a Megnehelic pressure gauge for the Pre/HEPA filter replacement indicates to the user filter degradation. Contact one of our specialists today to enquire about your application, or to find out more about the SafeGuard VLF™.

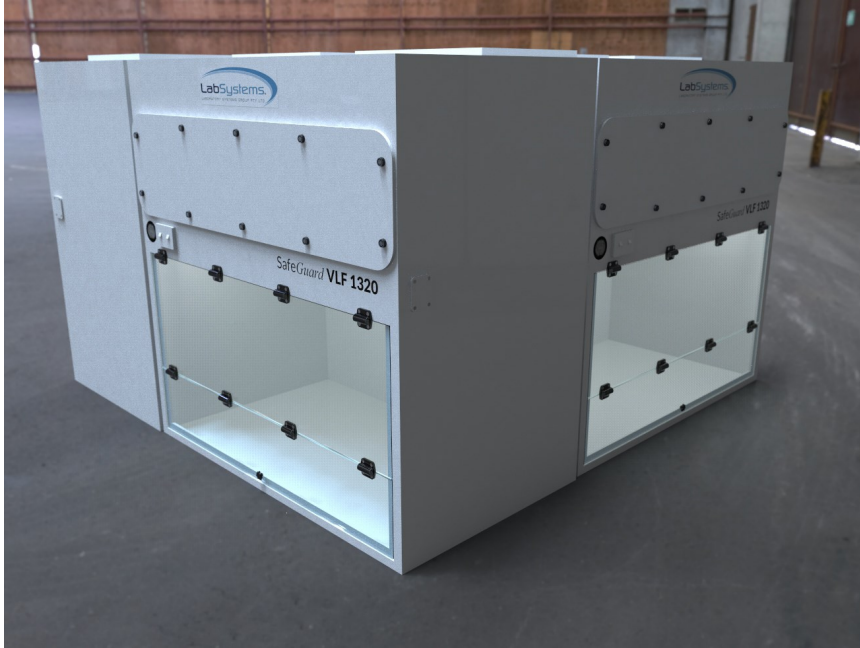
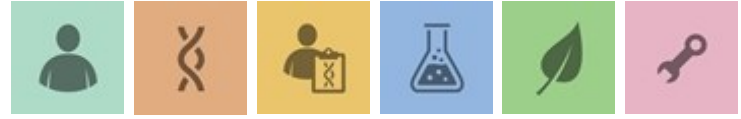


#### Features

- Designed & manufactured in Australia
- ISO Class 5 vertical laminar flow
- Pre/HEPA filter replacement alarm
- Compact & modern
- Simple cleaning & maintenance
- Standard LED light
- Standard Cord port
- HEPA filtration system
- Microswitch door safety mechanism for when the unit is closed to maintain a clean environment.

# SafeGuard™ VLF Pro

## Vertical Laminar Flow Cabinet



### Options;

- Optional fully closing folding sash
- Optional ULPA\* filters, \*Boron Free filters
- Optional powder coated steel under bench with adjustable legs
- Optional UV lighting - for cabinet sterilisation
- Customisable to suit your application
- No exposed metal construction.
- Polypropylene metal free support bench

DIMENSIONS	SGVLF 1320	SGVLF 1625	SGVLF 1930	SGVLF 2540
HEIGHT—EXTERNAL	1350MM	1350MM	1350MM	1350MM
WIDTH—EXTERNAL	1320MM	1625MM	1930MM	2540MM
DEPTH—EXTERNAL	780MM	780MM	780MM	780MM
WEIGHT	50KG	75KG	100KG	150KG

AIRFLOW DATA	SGHLF 1300	SGHLF 1600	SGHLF 1900	SGHLF 2500
AIRFLOW CAPACITY	329l/sec	418l/sec	502l/sec	658l/sec
FACE VELOCITY	0.45M/sec	0.45M/sec	0.45M/sec	0.45M/sec

All units are fully assembled and shipped with pre-filters installed—ready to operate. The filters are factory tested at manufacture for efficiency to the rated specification of the filter. It is recommended that the filter be tested on site for integrity by D.O.P testing.

*Please note:*

The unit is equipped with filters which are designated for removing particulate matter only. These filters will not protect the operator from fumes or vapours. Please check your application with our Sales Team.

Filters should be monitored, tested and changed as per manufacturer's recommendations (see Operation Manual for full details).\* See Options